

## *Quick User Guide*

---

# DB90-RX

## IP Audio Decoder

### → **BEFORE YOU USE THIS PRODUCT** ←

In order to be able to enjoy all the benefits of owning your new DEVA product, please verify first that the latest software and firmware release were installed.

Visit [www.devabroadcast.com/downloads](http://www.devabroadcast.com/downloads) for the most recent software and firmware downloads, prior the installation.

This Quick user guide will make the installation of DB90-RX quick and easy. Applying these steps, you can simplify the process and save yourself extra time and effort. **For more information about the Safety precautions and the Operating environment recommendations please refer to the User Manual.**

**NOTE:** Preferably, connect the device to a DHCP Server network from which DB90-RX will receive an IP address.

## STEP 1 Connection

To operate the device you need to know its IP Address. In case you are not aware of it, you can hear it through the headphones when you turn on the the device. Alternatively, use the Network discovery feature at Local networks (*for reference see Step 9*).

1. Connect the device to a local network or to the Internet by a cable with an RJ-45 connector;
2. Connect the DB90-RX to the power supply.

## STEP 2 WEB Interface

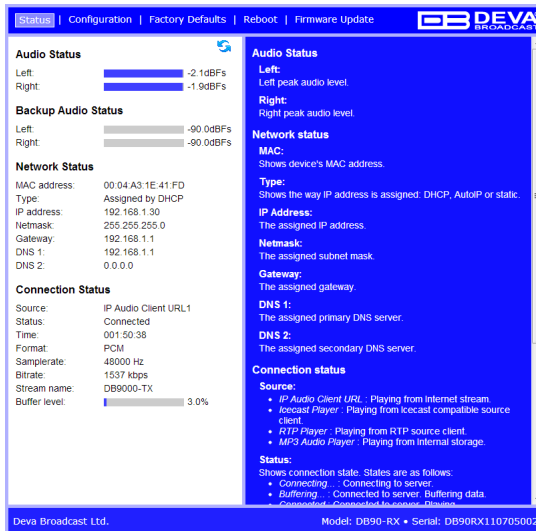
Open a WEB Browser and enter the device IP address in the browser's address field, then press Enter.

The web interface will be displayed to you with the respective main pages: Status; Configuration; Factory Defaults; Reboot; Firmware Update.

## STEP 3 Status Section

Current status information will be displayed comprising Audio Status; Network Status; Connection Status.

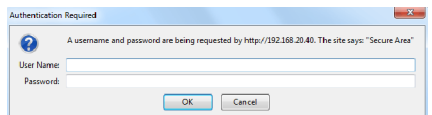
For further reference see the detailed explanation on the right part of the screen.



**NOTE:** Clicking on the *LIVE DATA* icon will toggle live data *ON* and *OFF*

## STEP 4 General Settings

Click on the Configuration button. Dialog box similar to the following will appear. Fill in the username and password requested, default values being: username: *user* and password: *pass*.



## STEP 5

## Network Configuration

### General Network Settings

If you prefer to use static settings please disable the DHCP and fill in the information requested - IP Address, Netmask, Gateway, Primary and Secondary DNS. Otherwise, enable the DHCP.

### Web Server Settings

In order to enhance the security of DB90-RX you can set new username and password. A dialog box requesting your NEW username and password may appear.

**NOTE:** If username and password fields are left blank, **NO** security is used.

### Other Settings

By choice, you can change the name of the device. Later on it will be used as a title name on all WEB pages. Customizing the name will make the device more recognizable.

### SNMP Settings

Press the **Download** button to download the proper DB90-RX SNMP MIB file. Then **specify** Agent ID, Agent Port, Community, Manager IP and Manager Port.

**Agent ID** is used to identify the device among others when a SNMP notification is send. Agent - enables/disables SNMP Agent.

The screenshot shows the 'Configuration' tab of the web interface. The 'General' section has 'DHCP' checked. 'IP Address', 'Netmask', 'Gateway', 'Primary DNS', and 'Secondary DNS' are all set to '0.0.0.0'. The 'WEB server' section has 'Port' set to 3001, 'Username' set to 'user', and 'Password' set to 'pass'. The 'Other settings' section has 'Name' set to 'DB90-RX'. The 'SNMP' section has a 'Download' button for the MIB file, and 'Agent' is checked. 'Agent Port' is 161, 'Manager Port' is 162, 'Agent ID' is 0, 'Community' is 'DEVA90', and 'Manager IP' is '0.0.0.0'. A 'Save' button is at the bottom.

## STEP 6

## IP Audio Configuration

### Source Priority

DB90-RX has one main and two backup audio sources. If the audio signal of the main source disappear the device will switch to the first available backup source.

When the main audio signal is recovered DB90-RX will automatically switch back to it. Depending on your needs the priority of the connections should be specified.

### RTP Audio Player

Choose a port and decoder.

### Icecast Audio Player

Choose a port and decoder. The username and password are used to secure the connection. Make sure to enter the same on both sides.

### IP Audio Player

DB90-RX has one main URL and two alternative Stream Audio Sources URL2, URL3. Switching between streams is immediate on audio loss. When current Stream is URL2 or URL3 and connection to URL1 is restored there will be an instantaneous switch back to URL1.

If the server does NOT use Port 80 you should enter URL and Port of the Encoder. For example 192.165.1.21:2100.

**NOTE:** The selected players' decoders must match the settings of the encoder devices on the other side of the connection.

### Analog Audio Output

Adjust the analog output level of the device.

The screenshot shows the 'IP Audio' configuration tab. Under 'Source Priority', 'Main' is 'RTP Player', 'Backup 1' is 'IP Audio Client', and 'Backup 2' is 'Icecast Player'. The 'RTP Audio Player' section has 'Port' 5004 and 'Decoder' 'MPEG1 / auto (MP3)'. The 'Icecast Audio Player' section has 'Port' 5555, 'Username' 'source', 'Password' 'pass', and 'Decoder' 'MPEG1 / auto (MP3)'. There are three 'IP Audio Client' sections (1, 2, 3). 'IP Audio Client 1' has 'URL' '192.168.1.21:2100', 'Decoder' 'HE-AAC / auto (AAC)', 'Channels' 2, 'Prebuffer' 32768, 'Buff. Timeout' 30 sec, and 'Gain Adjust' 0 dB. 'IP Audio Client 2' and 'IP Audio Client 3' have 'URL' blank, 'Decoder' 'MPEG1 / auto (MP3)', 'Channels' 2, 'Prebuffer' 32768, 'Buff. Timeout' 30 sec, and 'Gain Adjust' 0 dB. The 'Analog Audio Output' section has 'Analog Level' set to 10%. A 'Save' button is at the bottom.

## STEP 7

## Backup Audio Configuration

### Audio Loss and Audio Recover

Select the appropriate levels of loss and recovery of the audio signal. Do not forget to set the timeout.

Set whether the loss of audio should be registered by the one channel only or for both of them.

## The Factory Defaults page



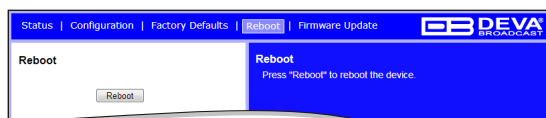
To restore DB90-RX to its Factory Defaults you should first press the Restore button. A new window will appear: confirm that you want to restore factory defaults and wait for the process to complete. All settings will be restored to their factory defaults except for

Network and WEB server Settings which remain unchanged. On completion of the process the settings should have the proper default values.

## Hardware Reset

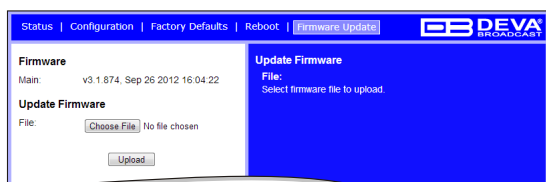
This process will fully restore DB90-RX to its Factory Defaults, including the Network settings. To start a Hardware Reset, disconnect the power supply cable from the unit. Then locate the RESET button on Rear panel, press and hold it. Afterwards, connect the power supply cable to the unit and keep the RESET button hold until the POWER led starts blinking. Release the RESET button and wait for DB90-RX to reboot with the factory default settings.

## Rebooting



To start Rebooting of DB90-RX press the Reboot button. A dialog warning window will appear. Confirm that you want to reboot the device and wait for the process to complete.

## Firmware Update



To update the device firmware, please select the new firmware file. Press the Upload button. A dialog window will appear. Confirm firmware update and wait for the process to complete.

**NOTE:** The latest Firmware file can be downloaded from [www.devabroadcast.com](http://www.devabroadcast.com)

1. Open Advanced sharing settings by clicking the **Start** button, and then on "**Control Panel**". In the search box, type "**network**", click "**Network and Sharing Center**", and then, in the left panel click "**Change advanced sharing settings**".
2. Select your current network profile.
3. Click **Turn on network discovery**, and then click Save changes. If you're prompted for an administrator password or confirmation, type the password or provide confirmation.
4. To access the device open a new Explorer bar and click on **Network** . If you have successfully enabled the network discovery option, the device will be displayed. Double click on **DB90-RX** will open a new WEB browser window.

**NOTE:** If you have already enabled this function on your computer just open a new Explorer bar and click on **Network**. The device must be displayed. If not follow the instructions from Step 9.

**Enjoy the work with DB90RX - a product of superb quality and functionality.  
For detailed explanations concerning the device refer to its complete manual.**