



# VIVA<sup>TM</sup> CMY

ROTATING AND STATIC GOBOS

FAST MOVEMENT

LOW POWER CONSUMPTION

WHITE LED ENGINE

CMY COLOUR MIXING SYSTEM

ZOOM 9°-40°

## Packaging

Cardboard



### Exterior dimensions

485 x 420 x 730 mm  
(19.1" x 16.5" x 28.7")

Single Top Loader Case



485 x 420 x 730 mm  
(19.1" x 16.5" x 28.7")

Dual Top Loader Case



610 x 600 x 865 mm  
(24.1" x 23.6" x 34.1")

Quad Top Loader Case



1060 x 600 x 860 mm  
(41.7" x 24.6" x 33.9")



[www.robe.cz](http://www.robe.cz)



Head office: ROBE lighting s. r. o. | Házovice 2090 | 756 61 Rožnov pod Radhoštěm | Czech Republic  
Tel.: +420 571 751 500 | Fax: +420 571 751 515 | E-mail: [robe@robe.cz](mailto:robe@robe.cz)

Factory: ROBE lighting s. r. o. | Palackého 416 | 757 01 Valašské Meziříčí | Czech Republic

October 2019 © ROBE lighting s. r. o. All specifications subject to change without notice. Patents pending.



# Viva™ CMY

# Viva™ CMY

# Viva™ CMY

# Viva™ CMY

Powerfully smooth, Robe's VIVA CMY combines brightness of exceptionally clear zero-fringing white beam together with continuous color transitions of CMY mixing. Elegant and lightweight, packed with smart effects that are easy to use. The fixture is very powerful yet consumes little energy. The 350W white LED light engine gives an extra punchy beam and an incredible 20.000 hours of operation – in fact, no relamping will be needed for the entire life of the fixture!

Smooth color transition and fixed vivid and radiant colours can be applied from CMY mixing system and colour wheel, and rotating or static gobos added for projections or mid-air effects. The smooth zoom can go out to 40 degrees at its widest and be softened it up with variable frost to create a gentle wash-like output or dynamic background projections.

The minimum 9° zoom produces a piercing beam that can be trimmed with ultra-fast stepless iris for really punchy output, and VIVA has extremely fast pan/tilt movement using Robe's proprietary EMS™ (Electronic Motion Stabiliser) technology. That and much more is possible with VIVA™ CMY – entertaining and contemporary!

## Source

- Light source type: 350W White LED engine
- LED life expectancy: min. 20.000 hours
- Typical lumen maintenance: 70% @ 20.000 hours
- Colour temperature: 6.500 K
- Light source warranty: 3 years or 20.000 hours

## Optical System

- Robe's proprietary optical design
- High - efficiency zoom optical system, ratio 4,5:1
- Zoom range: 9°-40°
- Even flat field, 2:1 hotspot
- Output lens diameter: 120 mm
- Fixture total lumen output: 12.040 lm
- Brightness: 30.060 lx @ 5m

## Dynamic Effects

- Cyan: 0-100%
- Magenta: 0-100%
- Yellow: 0-100%
- Colour Wheel: 6 fixed dichroic colours + white
- Virtual Colour Wheel: with 66 preset swatches
- Rotating gobo wheel: 7 rotating, indexable, replaceable "SLOT&LOCK" glass gobos + open
- Static gobo wheel: 9 aluminium gobos + open
- Prism: 3-facet circular rotating prism
- Iris: Motorized, stepless, pulse effects up to 3 Hz
- Effects: 3-facet circular rotating prism
- Frost: Variable, replaceable 20° frost filter; optional 1°, 10° and 30°
- Motorized zoom and focus
- Shutter: Electronic with variable speed strobe (max.20 flashes per second)
- Pre-programmed random strobe & pulse effects
- High resolution electronic dimming: 0-100%

## Control and programming

- Setting & Addressing: ROBE Navigation System 2 (RNS2)
- Display: QVGA Robe touch screen with battery backup, gravitation sensor for auto screen positioning, operation memory service log with RTC, stand-alone operation with 3 editable programs (each up to 100 steps), built-in analyser for easy fault finding
- Protocols: USITT DMX-512, RDM, ArtNet, MA Net, MA Net2, sACN
- Wireless: Wireless CRMX™ technology from Lumen Radio: On request

## Rotating Gobos

- 7x Rotating Glass Gobos
- Outside diameter: 26.8 mm
- Image diameter: 22.0 mm
- Thickness: 1.1 mm
- Max. Thickness: 4.0 mm
- High temperature borofloat or better glass
- "SLOT&LOCK" system for easy replacement of gobos

## Movement

- Pan movement: 540°
- Tilt movement: 270°
- Control channels: 32, 26
- Pan/Tilt resolution: 16 bit
- CMY: 8 bit
- Colour wheel positioning: 8 bit
- Rotating gobo wheel positioning: 8 bit
- Gobo indexing & rotation: 8 or 16 bit
- Static gobo wheel positioning: 8 or 16 bit
- Iris: 8 or 16 bit
- Frost: 8 bit
- Zoom: 8 or 16 bit
- Focus: 8 or 16 bit
- Dimmer: 8 or 16 bit (internal 18 bit)

## Thermal Specification

- Maximum ambient temperature: 45 °C (113 °F)
- Maximum surface temperature: 80 °C (176 °F)
- Minimum operating temperature: -5 °C (23 °F)

## Static Gobos

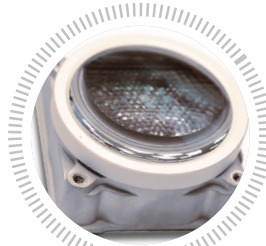
- Aluminium wheel with 9 fixed gobos + open position
- Image diameter: 23.0 mm
- Thickness: 0.5 mm

## Approvals

- CE Compliant
- cETLus Compliant (pending)

## White LED Engine

New powerful white 350W LED engine with low power consumption specifically designed for VIVA CMY offers 20.000 hours lifetime and very compact size. Innovative design with sophisticated heat management ensures very quiet operation.



## Electrical Specification and Connections

- Power supply: Electronic auto-ranging
- Input voltage range: 100-240 V, 50/60 Hz
- Power consumption: 400W at 230 V / 50 Hz
- Power in connector: Neutric powerCON TRUE1
- High temperature borofloat or better glass
- DMX and RDM data in/out: Locking 3-pin & 5-pin XLR
- Ethernet port in: RJ45

## Mechanical Specification

- Height: 664 mm (26.1")
- Width: 382 mm (15")
- Depth: 250 mm (9.8")
- Weight: 19 kg (41.9 lbs)

## Accessories

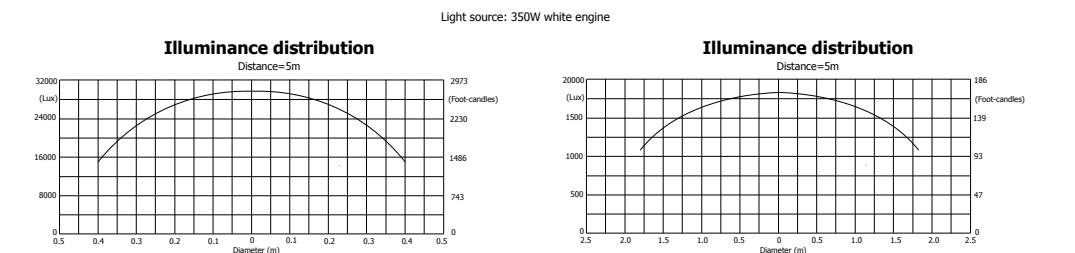
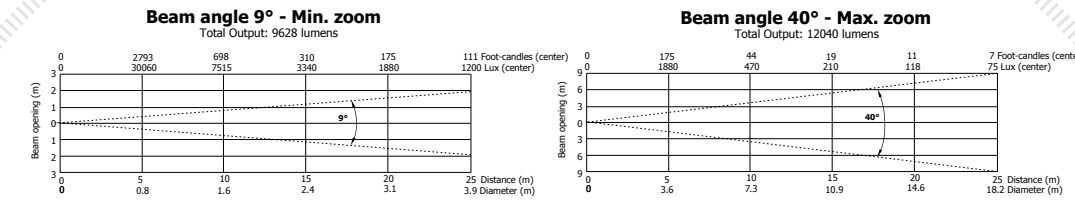
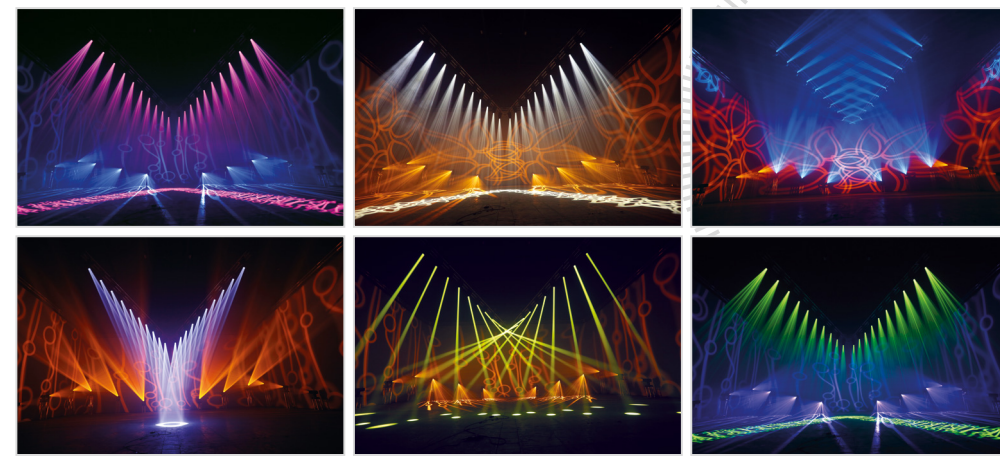
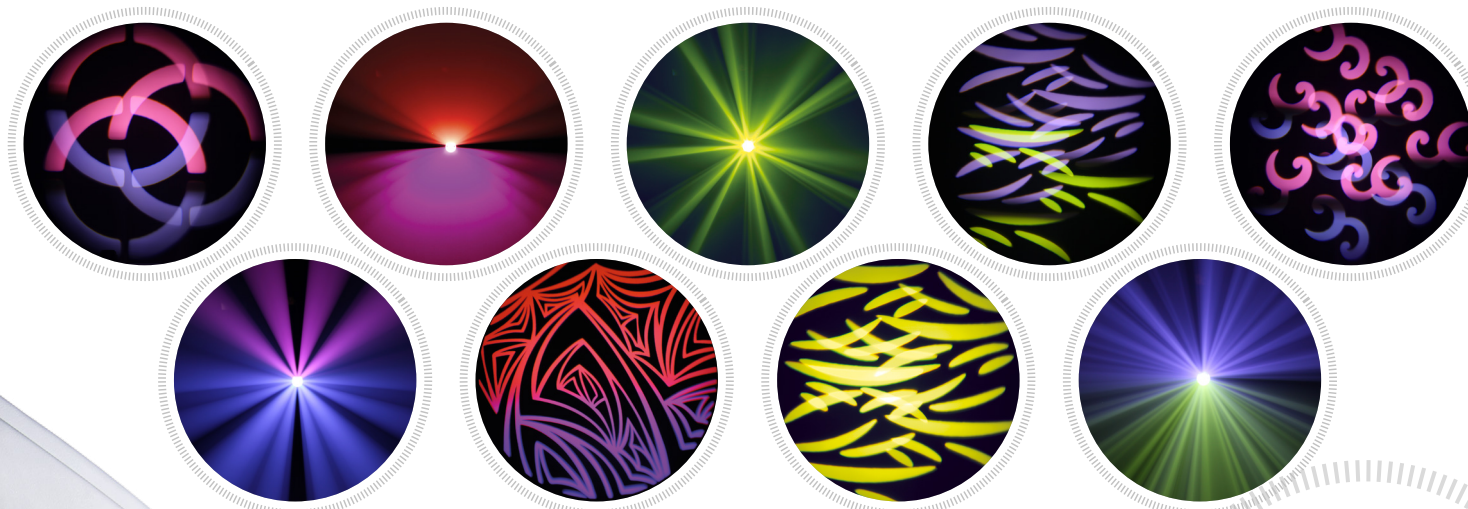
- Frost 1° (exchange) assembled: 10980308
- Frost 10° (exchange) assembled: 10980309
- Frost 30° (exchange) assembled: 10980310
- Doughty Trigger Clamp: 17030386
- Safety wire 35 kg: 99011963
- Single Top Loader Case: 10120209
- Dual Top Loader Case: 10120210
- Quad Top Loader Case: 10120211
- Foam Shell: 20020295

## Included Items

- User Manual
- Omega Adaptor CL-regular 2 pcs
- Power cord including powerCON TRUE1 In connector

## Legal

- VIVA™ is a trademark of Robe lighting s.r.o.
- VIVA™ CMY is patented by Robe lighting s.r.o. and protected by one or more pending or issued patents



## CMY Colour Mixing system:



## Rotating gobo wheel



## Static gobo wheel

