

## *Quick User Guide*

---

# BIG VOICE<sup>2</sup>

## Base version

→ **BEFORE YOU USE THIS PRODUCT** ←

In order to be able to enjoy all the benefits of owning your new SOUND4 product, please verify first that the latest software and firmware release were installed.

Visit [www.sound4.com/downloads](http://www.sound4.com/downloads) for the most recent software and firmware downloads, prior the installation.

This Quick user guide will make the installation of SOUND4's BIG VOICE quick and easy. Applying these principles, you can simplify the process and save yourself extra time and effort.

## STEP 1 In-Box Admin Ethernet

This tool is dedicated to In-Box Products, and especially for products that don't get the possibility to setup Admin Ethernet IP from front panel (eg: BIG VOICE<sup>2</sup> Base). This software will do an automatic network discovery and find SOUND4 In-Box products currently connected to be able to setup Admin Ethernet IP.

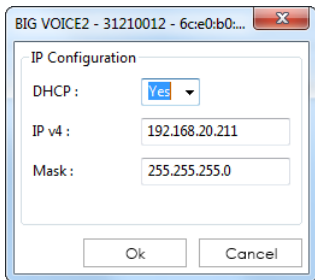
The software can be downloaded from [www.sound4.com/products/big-voice-2-base#downloads](http://www.sound4.com/products/big-voice-2-base#downloads)

**Important:** This software will also install a needed third party software called WinPcap.

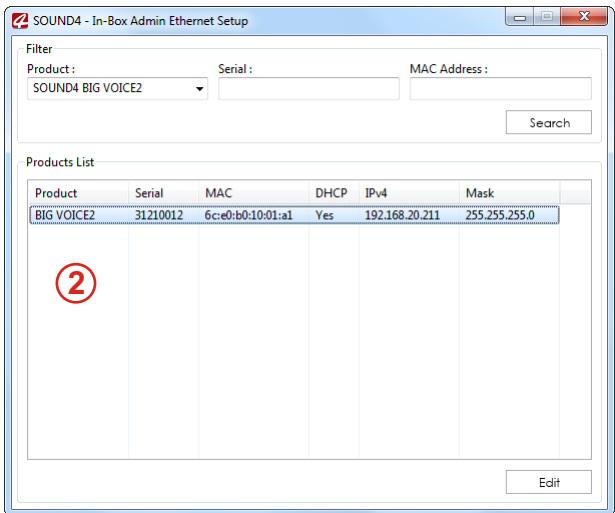
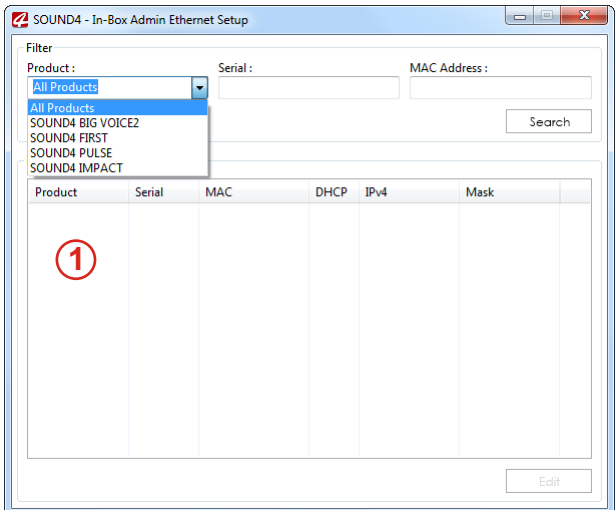
### STEP 1.1 Scan and Edit

In order for the program to be able to scan the device, please make sure that the unit is connected to the power supply chain and in the Ethernet network. Then, open the **In-Box Admin Ethernet** and follow the instructions listed below:

1. Once the program window opens, select the model of the device to be scanned from the Product sub-section (as depicted on picture (1)).
2. Once the scanning process is completed, the collected data will be depicted in section Product List (as depicted on picture (2)).
3. To change the parameters, double click with the mouse cursor on the line with the product of interest. A new window will appear:



4. Apply the needed changes and press OK.
5. To use the device, you need to install the Remote Control Software (Step 2).



## STEP 2

### Software Universal Installer

The Universal Products Installer is the complete installation kit for all SOUND4 Products. The program is provided free of charge and can be downloaded from [www.sound4.com/downloads](http://www.sound4.com/downloads). Installation packages for MS Windows and Linux Ubuntu OS are available.

## STEP 2.1

### Windows users

Upon entering the section, click on and download Universal All Products Installer. Once the process is completed install the .exe file. SOUND4's products are compatible with the Microsoft Windows Operating Systems listed below:

- Windows 7 - 32 & 64 bits
- Windows 8 - 32 & 64 bits
- Windows 10 - 32 & 64 bits
- Windows Server 2008 - R2
- Windows Server 2012

#### IMPORTANT NOTE:

Due to Microsoft security changes, your operating system must be up-to-date, if not SOUND4 Driver will be locked by Microsoft and you will be not able to run the SOUND4 Remote Control Software.

## STEP 2.2

### Linux Ubuntu OS

SOUND4 proposes you to install the software package under your own Ubuntu. Compatibility with Ubuntu distributions:

- Lucid Lynx - 10.04 LTS
- Precise Pangolin - 12.04 LTS
- Trusty Tahr - 14.04 LTS
- Xenial Xerus - 16.04 LTS

#### Installation For a PC hosting SOUND4 card and running compatible Ubuntu version:

1. Click on the following link to add SOUND4 repository - [www.sound4.biz/repository/ubuntu/sound4-repository.deb](http://www.sound4.biz/repository/ubuntu/sound4-repository.deb)
2. Then install the driver with following link - [apt://sound4exp1?refresh=yes](http://apt://sound4exp1?refresh=yes)
3. Finally, install the SOUND4 server with following link - [apt://sound4server](http://apt://sound4server)

#### If you also want to install:

- the SOUND4 Remote Control, please use the following link - [apt://sound4remote](http://apt://sound4remote)
- the SOUND4 Stream, please follow the link - [apt://sound4stream](http://apt://sound4stream)

#### If you prefer to manage package installation by yourself, please follow the instructions below:

1. Add the following source to your Ubuntu repository list (example for Lucid) - [deb http://www.sound4.biz/repository/ubuntu/lucid/non-free](http://www.sound4.biz/repository/ubuntu/lucid/non-free.deb)
2. Then get the SOUND4 GPG signature key - [wget -q http://www.sound4.biz/repository/sound4.gpg](http://www.sound4.biz/repository/sound4.gpg) -O- | sudo apt-key add -
3. Install required packages - `sudo apt-get update && sudo apt-get install sound4exp1 sound4server sound4remote sound4stream`
4. Add the user to the audio group (needed for Alarm Stacker GUI) - `sudo adduser $USER audio`
5. Log off and on to make the settings effective.

### STEP 3

### Connection

If not already done that, for the initial set-up of the device you will only need to connect:

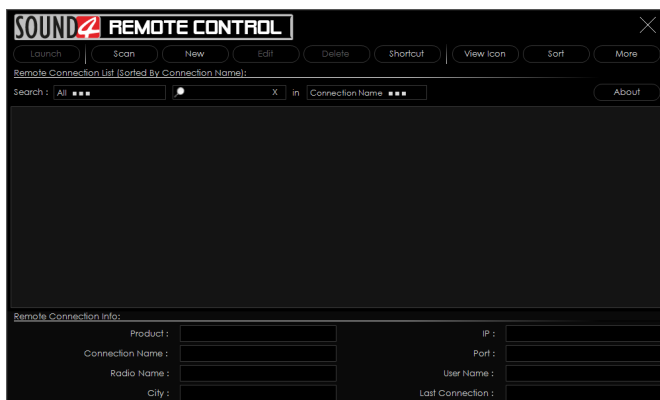
- 1 of the power cables to PSU 1 socket;
- Connect BIG VOICE to the TCP/IP network using a direct network cable, connected to the ADMIN port of the device NOT to the IP ports.



### STEP 4

### Software

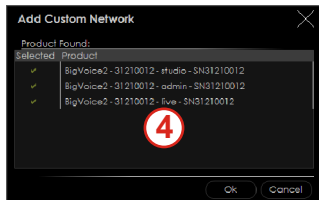
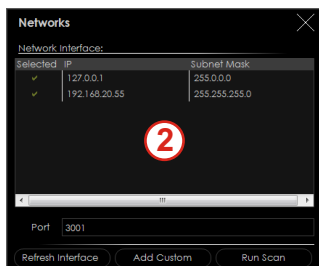
Double click on the software will open the main control window. The Remote control software can maintain several devices at once. There are two options of adding a new device. Both are explained in details below.



### STEP 4.1

### Scan interactive button

1. Press the [Scan] button;
2. A window with all network interfaces on the PC will appear. Select the IP address (the interface) on which the scan should be made, and press [Run Scan];
3. Wait until the scan is completed;
4. Upon completion, the Add Custom Network message will appear;
5. To add the device to the list, select the connection and press [OK];
6. The device will be added automatically (as depicted in **Step 3.2**). Double click on the icon will open the device's interface (**Step 3.3**). The default access credentials are user name: **admin** and password: **admin**.



**STEP 4.2****Add Device manually**

1. Press the [New] button.
2. A new screen requiring the following information will appear:

The 'New' dialog box contains the following fields and buttons:

- Connection Name: Enter Connection Name
- Radio Name: Enter Radio Name
- City: Enter City
- Num / IP: localhost
- Port: 3001
- User Name: Enter Name
- Password: Enter Password
- Buttons: Ok, Cancel

4. Enter the required information, and the IP already set in Step 1.1. If not changed by the user, use the default value of the Port (3001). The username and password are as follows:
  - User name - admin;
  - Password - admin.
5. Press [OK]. All BIG Voice operation options will be added. To change the device's settings, double click on the **Studio** version will open the control interface (**Step 4.3**).

The interface displays the following information:

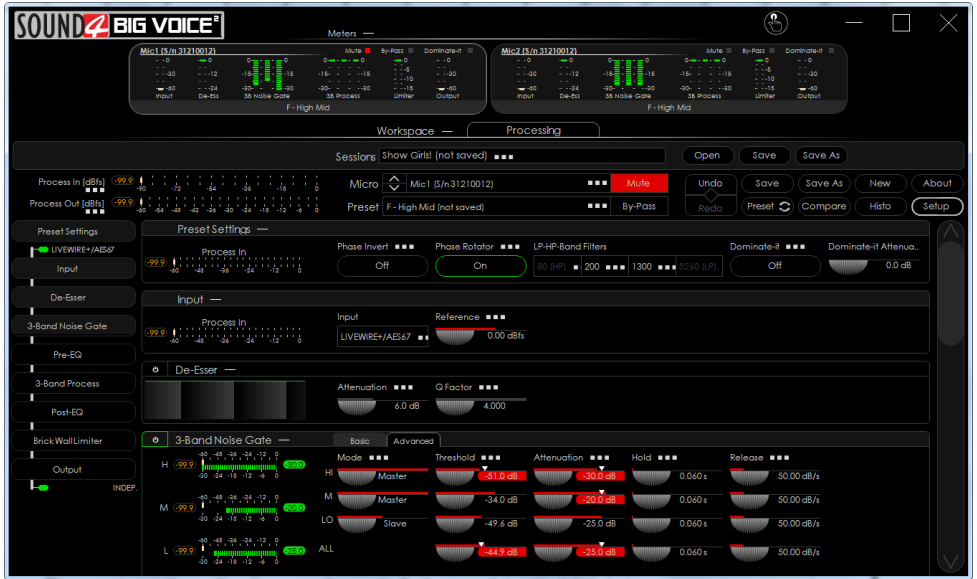
- Remote Connection List (Sorted By Connection Name):**
- Search: All in Connection Name
- Device List:
  - BigVoice2-31210012...
  - BigVoice2-31210012...
  - BigVoice2-31210012-studio-SN31210012
- Remote Connection Info:**

Product :	SOUND4 BIG VOICE2	IP :	192.168.20.211
Connection Name :	BigVoice2-31210012-studio-SN312...	Port :	3001
Radio Name :		User Name :	studio
City :		Last Connection :	

## STEP 4.3

## Successful Log-in

A successful log-in the system will open BIG VOICE's main control window:



## STEP 5

## License Upload

There are two options of loading a new license/s. Both are explained in details below.

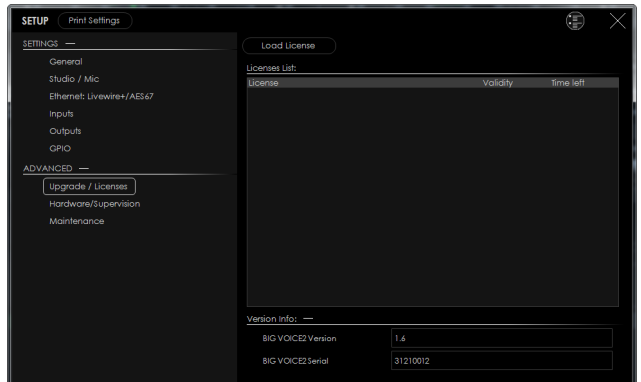
## STEP 5.1

## Expired License

If your license has expired, a warning message "Your main license has expired! Please contact SOUND4 for renew your main license" will appear on the screen.

To upload a new license follow the steps listed below:

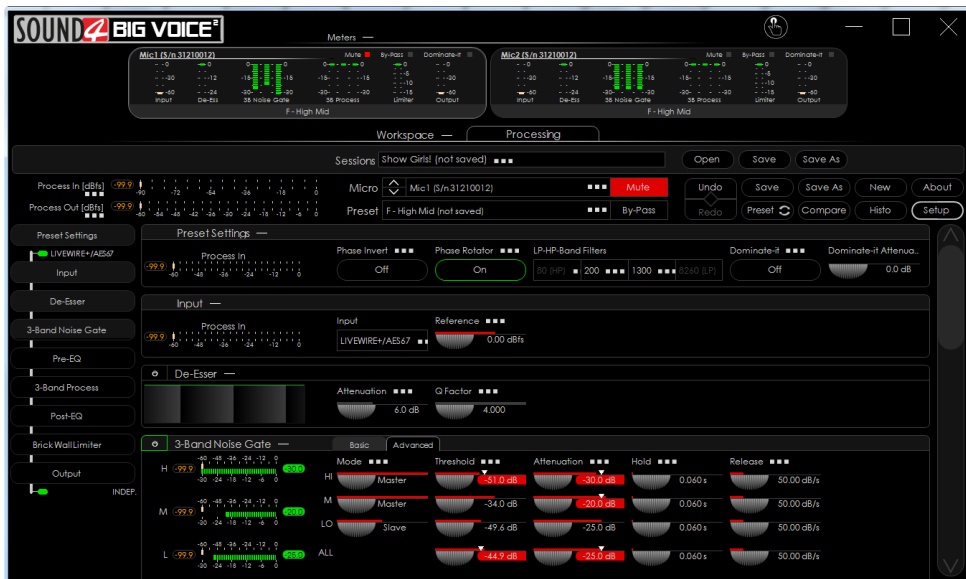
1. Press [OK]. The following screen will appear;
2. Press [License upload] and a new window requiring license file to be selected will open;
3. Go to the file directory, select the license and press [Open].



## NOTE:

All licenses are sent/provided in a ZIP file. It is not needed the file to be unzipped prior to their upload. They will be accepted by the program as they are.

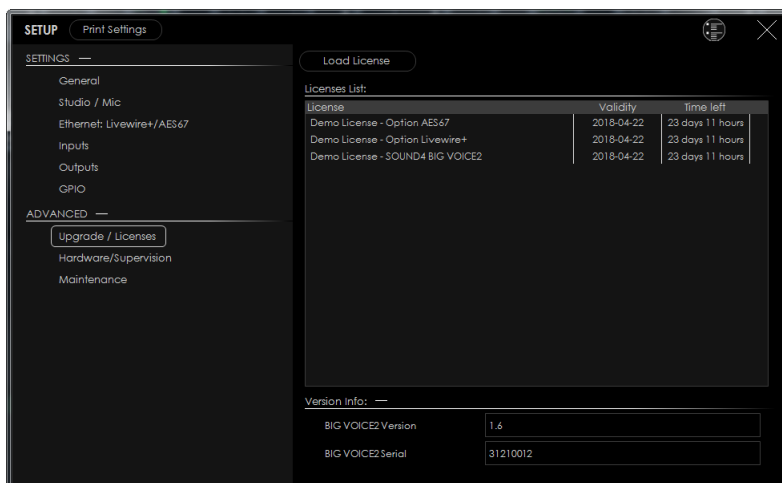
- Wait until the licenses are loaded;
- Once the process is completed, a notification message will appear;
- Press [OK] and the Main control window will appear.



## STEP 5.2

## NEW License

- Open the Main control window and click on [Setup]. The setup menu will appear;
- Scroll down with the cursor to the ADVANCED settings and press Upgrade/Licenses. The Following window will appear:



3. Press [Load Licenses];
4. Go to the file directory, select the license and press [Open].

**NOTE:** All licenses are sent/provided in a ZIP file. It is not needed the file to be unzipped prior to their upload. They will be accepted by the program as they are.

5. Wait while the licenses are loaded;
6. Once the process is completed, press [OK] and close the Setup window so that the Main control can appear.

## STEP 6

### Device basic set-up

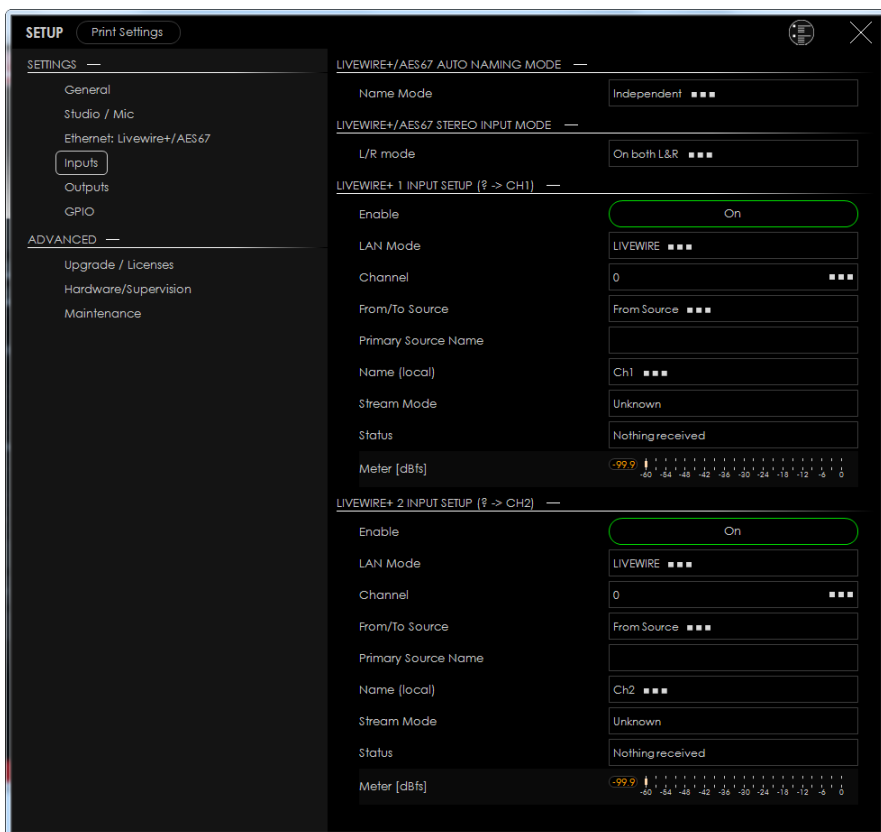
If not already done that, connect all the additional cables to the device in order for it to be properly integrated into your existing network.

The basic set-up of the inputs and outputs can be easily made via the SETUP page of the Software, section Settings.

## STEP 6.1

### Inputs Set-up

To setup the **Inputs**, press the **Setup** button. Once the SETUP window will appears, go to Settings > General > Inputs, then apply the needed settings to the Inputs. The set-up process is quite simplified.

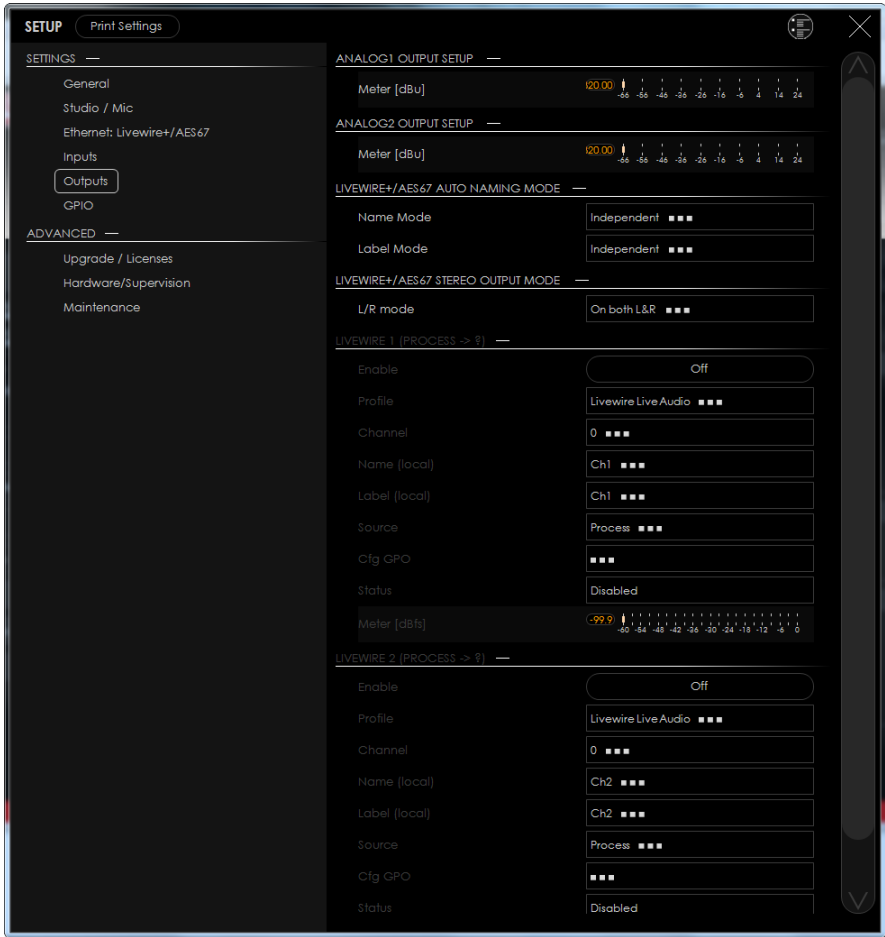




## STEP 6.2

## Outputs Set-up

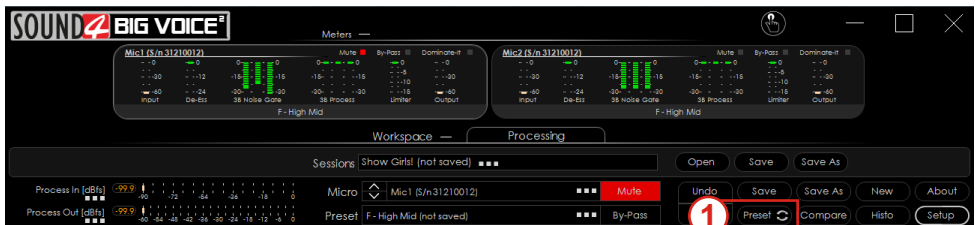
To setup the **Outputs**, press the **Setup** button. Once the SETUP window will appears, go to Settings > General > Outputs, then apply the needed settings to the Outputs. The set-up process is quite simplified.



## STEP 6.3

## Presets Selection

To select a preset, press on [Preset] button (1), and list of all presets will appear on the screen (2).



Double click on the desired preset will load it automatically to the device.

2

**Preset**

Save Save As New Delete Rename Security **Import** Export

Март 2018 (3)

- F - High Mid
- F - Hit tone version 2
- F - Structured tone

январь 2018 (11)

- M&F - Soft tone
- M&F - News Presenter - Soft tone
- M&F - News Presenter - Natural
- M&F - Natural Loud
- M&F - Natural
- M - Punchy
- M - Hot tone
- M - Hit tone
- M - Big Voice
- F - Hit tone
- BY-PASS

Sort By: Last Saved **Last On Air** Name

Preset Log:

Used On Channel:

1	2
▼	▼

Allowed in Live Mode:

Mode: ■■■

Preset Details:

Created On	
Saved On	
From Factory	
3 Bands Freq	

Functions:

High-pass
Low-pass
De-Easer
3-Band Noise Gate
3-Band Process
4-Band Parametric..

**Thank you for choosing SOUND4!**  
If you need any assistance on our side, please visit: [www.sound4.com](http://www.sound4.com)